



Saga²

Acoustical Luxury Vinyl Tile

Gerflor[®]

Sustainable by Design

Cork: Naturally High Performance



Natural & Rapidly
Renewable



Strong Indentation
Resistance

Reduces Carbon Footprint



Reduce carbon emissions in
your projects.

With the urgency of climate change
and the scarcity of natural resources,
we are committed to reducing the
environmental impact of our products.

Together, we can build a more
sustainable future, one step at a time.

we care / we act

Why choose Saga²?

Saga² is a noise-reducing resilient modular tile designed to match the thickness of carpet tiles, enabling seamless installation without the need for transitions. Featuring a cork and vinyl backing, Saga² delivers exceptional sound management throughout any space. With a durable 28-mil wear layer, it is protected by our exclusive ProtecSol® surface treatment, ensuring a no-wax, easy-maintenance surface for the lifetime of the flooring.



Coordinated Design/Colors

5 Designs | 23 Colors



Easy Maintenance

Ideal for high traffic areas.



Acoustic Rating (IIC 58)

Reduces the transmission of sound transmission between adjacent rooms and levels.



1564 Gentleman Terra & 1566 Urban Street Terra

1567 Tamo Clear & 1585 Tweed Green Chine



1561 Tamo Natural



1567 Tamo Clear



1559 Tamo Light



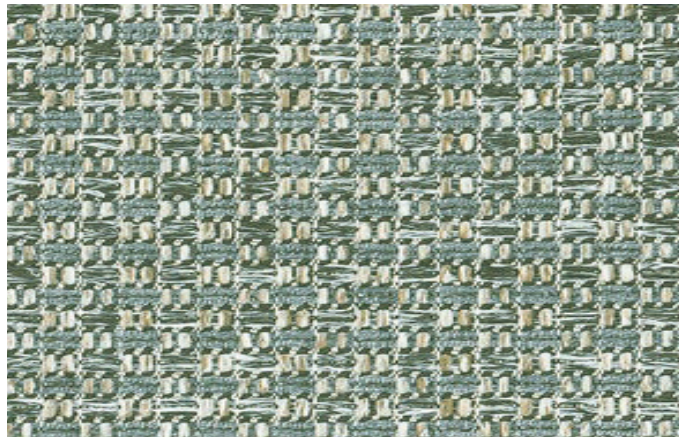
1560 Tamo Dainty



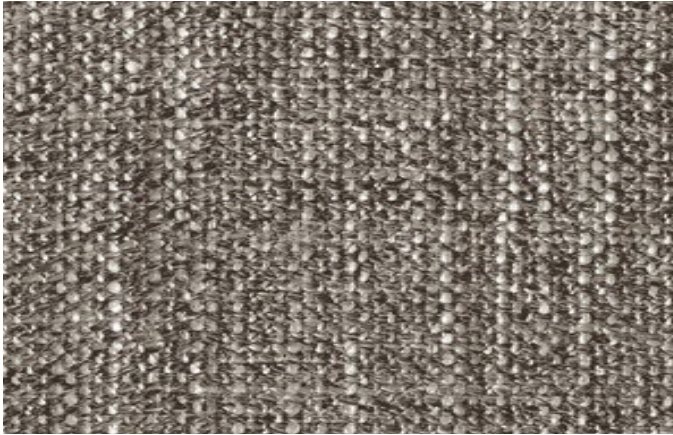
1584 Tweed Chine Amande & 1559 Tamo Light



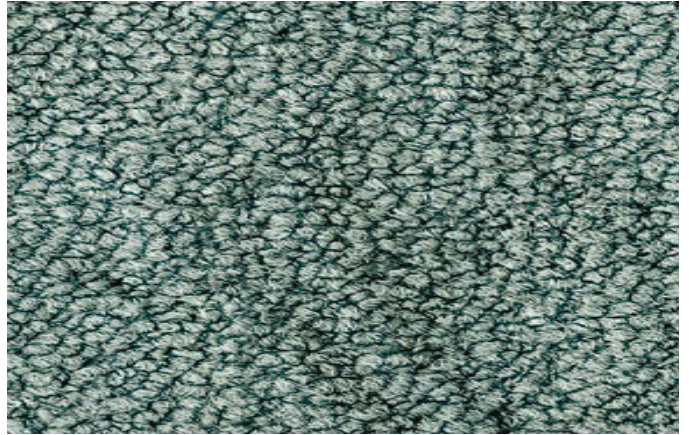
1608 Oxyd Light Beige



1584 Tweed Chine Amande



0089 Gentleman Taupe



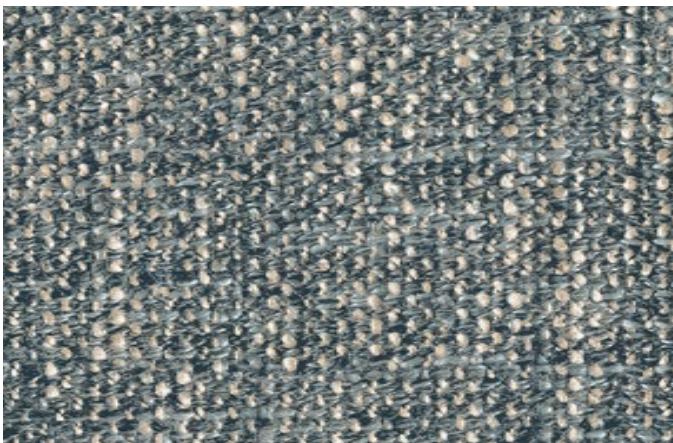
1609 Oxyd Light Green



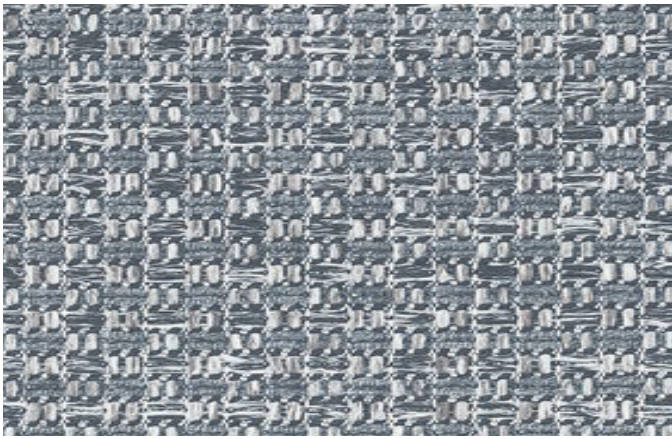
1588 Tweed Rose Ancien & 1560 Tamo Dainty



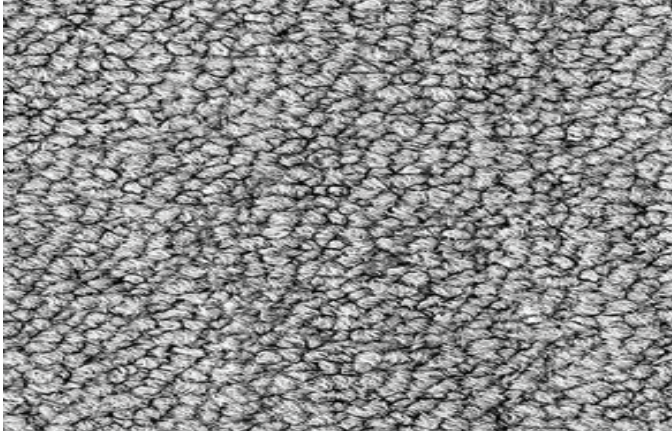
1585 Tweed Green Chine



1582 Gentleman Jean Chine



1586 Tweed Light Grey



1610 Oxyd Light Grey



1283 Urban Street Light



0030 Gentleman Blue



1284 Urban Street Medium



0088 Gentleman Grey



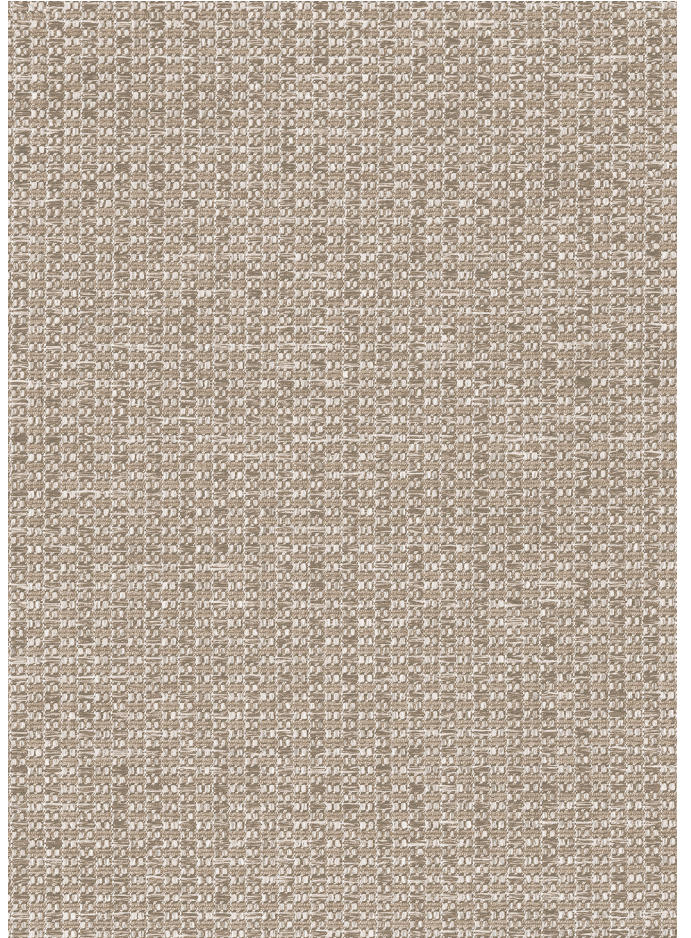
1563 Gentleman Cream



1565 Urban Street Cream



1564 Gentleman Terra

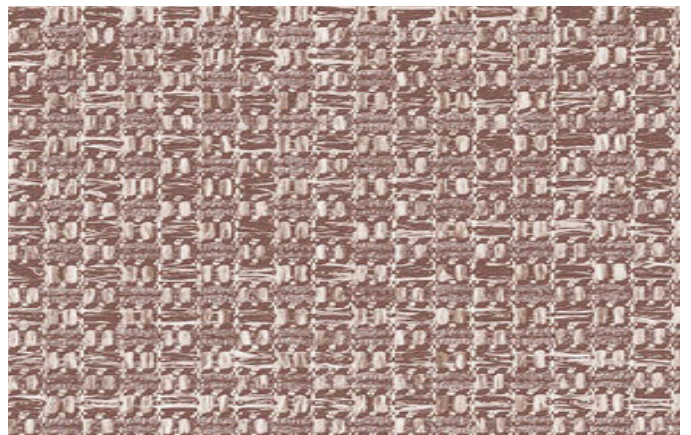


1581 Gentleman Abricot

1587 Tweed Medium Beige



1566 Urban Street Terra



1588 Tweed Rose Ancien



GERFLOR USA
877-437-3567
samples@gerflorusa.com
gerflorusa.com



GENA0154

DESCRIPTION	STANDARDS	REQUIREMENTS	SAGA ²
PRODUCT DESCRIPTION			
Reference Specification*	ASTM F1700	-	Class III, Type B
Backing	-	-	Compact Backing with Cork
Surface Treatment/Maintenance	-	-	ProtecSol®
Gauge Total Thickness	ASTM F386	-	0.18" (4.6 mm)
Wearlayer Thickness	ASTM F410	-	28 mil (0.7 mm)
Tile Size	-	-	19.69" x 19.69"
Coverage Per Box	-	-	26.9 ft ² (2.5 m ²)
Weight	-	-	1.15 lbs/ft ² (5.6 kg/m ²)
PERFORMANCE			
Static Load Resistance	ASTM F970	≤ 0.005"	Meets Requirements
Indentation - Residual	ASTM F1914	≤ -8%	Meets Requirements
Coefficient of Friction	ASTM D2047	-	0.56 (Leather) / 0.94 Neolite
Hardness	ASTM D2240	-	95
Squareness	ASTM F2055	-	Meets Requirements
Flexibility	ASTM F137	-	Meets Requirements
Impact Insulation (IIC)	ASTM E989 (ASTM E492)	-	IIC 58
Chemical & Stain Resistance	ASTM F925	-	Meets Requirements
Resistance to Heat	ASTM F1514	ΔE ≤ 8	Meets Requirements
Resistance to Light	ASTM F1515	ΔE ≤ 8	Meets Requirements
Fire Rating - Flame Spread	ASTM E648	Class 1	Meets Requirements
Fire Rating - (Flaming & Non-Flaming)	ASTM E662	-	Meets Requirements
ENVIRONMENT HEALTH & SAFETY			
Bacterio-Static**	ISO 22196	-	Inhibits spread of infections at 99%
Viro-Static**	ISO 21702	-	Inhibits growth of virus of 99.7% after 2 hours
Manufacturing Plant Certifications	ISO 9001, 14001, 50001	-	Quality, Environment, Energy
Environmental Product Declaration (EPD)	LEED v4 M+R	-	Product-Specific Type III
Material Ingredients: Health Product Declaration (HPD)	LEED v4 M+R	-	Self-Declared
No Harmful Chemicals	European Chemicals Agency (ECHA)	-	100% REACH Compliant
Sourcing of Raw Material: Recycled Content	Average Pre-Consumer Content	-	20%
Indoor Air Quality	California Standard 01350	-	FloorScore® Certified
Production Waste	In-Plant Recycling	-	100% Manufacturing Waste Recycled
TVOC after 28 days	ISO 16000-6	-	<10 µg/m2
WARRANTY	10-year limited manufacturer warranty when installed in accordance with Gerflor's installation instructions on gerflorusa.com		

*Rubber leaves indelible stains on synthetic floorings: Do not use mats or any other products with rubber backing and replace tubular furniture feet with those made of PVC or polyamide. Place mats of sufficient length at entrances to reduce outside sources of dirt.

** The best defence against the spread of infections is the implementation of an effective cleaning method.

For the most updated documentation and specification content, please visit gerflorusa.com

SAGA² USA Binder - 2025

